



INDOFINE Chemical Company, Inc.

121 Stryker Lane, Bldg. 30

Hillsborough, NJ 08844 USA

Phone: (908) 359-6778; Fax: (908) 359-1179

Certificate Of Analysis

025411S

R-(-)- α -PHELLANDRENE

Lot No.: 21060325

IDENTIFICATION

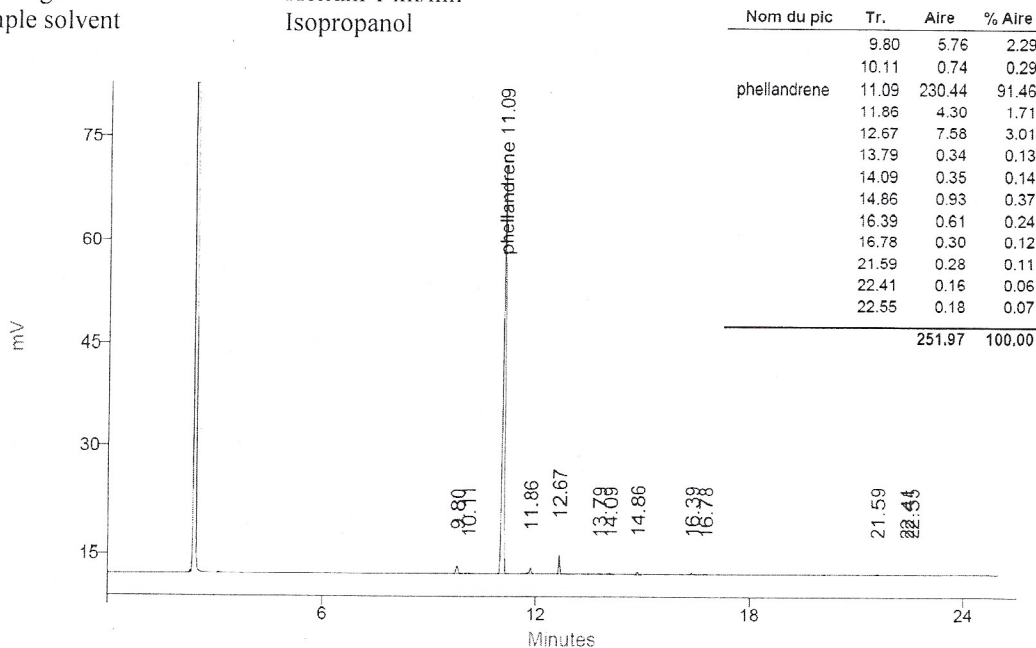
CAS Number	[4221-98-1]
Molecular formula	C ₁₀ H ₁₆
Molecular weight	136,24

ANALYSIS

TEST	SPECIFICATION (May 2021, version 11.1)	RESULT
Appearance	Liquid	Conform
$[\alpha]_D$	c=0.5 in diethylether	- 213°
Moisture		< 0.2 %
Assay (GC)*	≥90% (sum of enantiomers)	Conform

GC

Column DB5 capillary 30m x 0.32 mm x 0.25 μ m
 Temperature Column 70 (10 min) to 220°C (10°C/min)
 Injector 200°C, Detector 230°C
 Detector FID
 Carrier gas Helium 1 ml/min
 Sample solvent Isopropanol



Contains 1000ppm BHT as inhibitor

The values given on the 'Certificate of Analysis' are the results determined at the time of analysis

Storage

Flammable. Store at <-15°C. UNSTABLE

Transport conditions

Ambient temperature